



MEACOCK & JONES

3 Bedrooms

House - Detached

Located in Hutton

**OFFERS OVER
£750,000**



enquiries@meacockjones.co.uk

www.meacockjones.co.uk

01277 218485

16 Princes Way Hutton

Brentwood | | CM13 2JN



An excellent opportunity to acquire a large, extended three bedroom detached house, situated on a spacious westerly plot. Offered to the market with no onward chain, the house is conveniently located, within 0.7 mile of Shenfield mainline railway station and shopping Broadway.

The rear garden, open plan kitchen/breakfast room and close proximity to good local schools, such as Brentwood and St. Martin's, will appeal to families that are looking to move to the area.



16 Princes Way

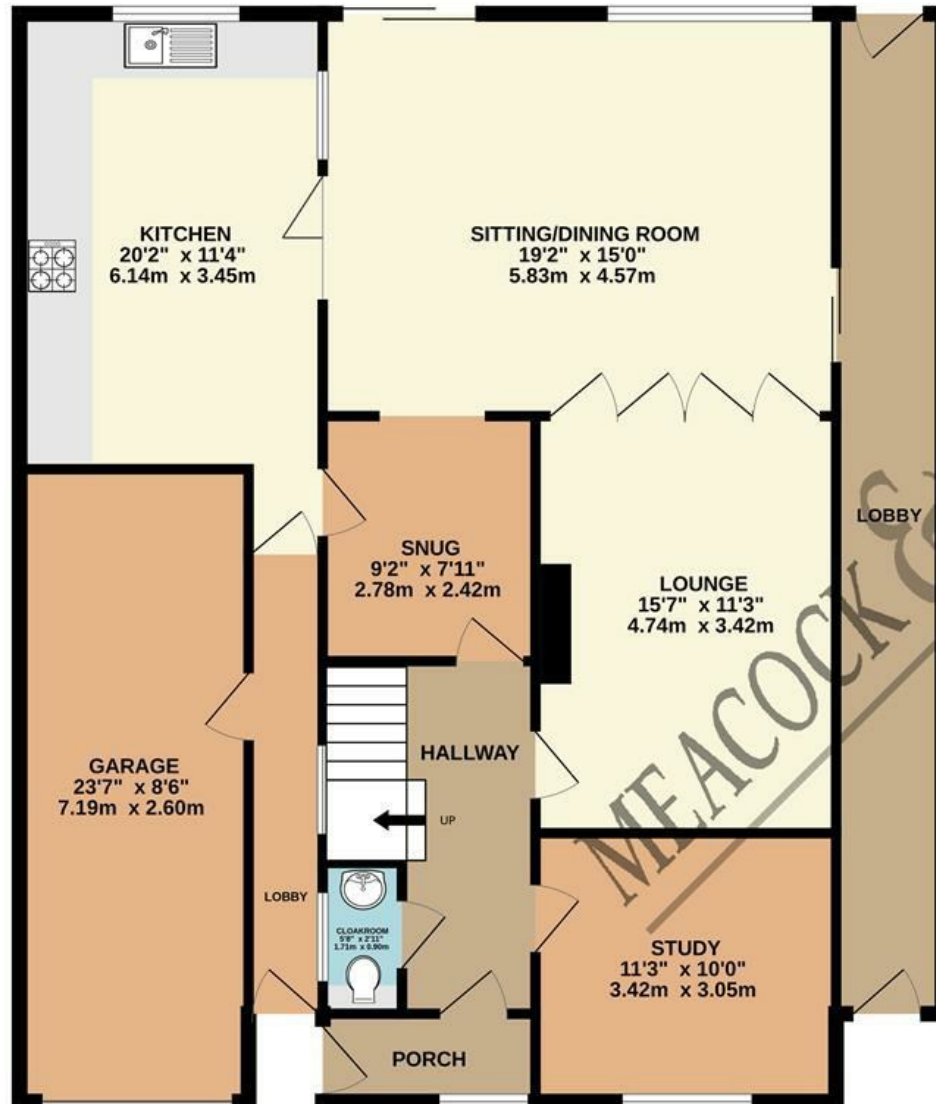
OFFERS OVER £750,000 Freehold

- Three Bedrooms
- Large Kitchen/Breakfast Room
- Garage
- Excellent Location
- Westerly Plot
- Family Bathroom
- Four Reception Rooms
- Spacious Rear Garden
- No Onward Chain
- Opportunity To Refurbish & Add Value

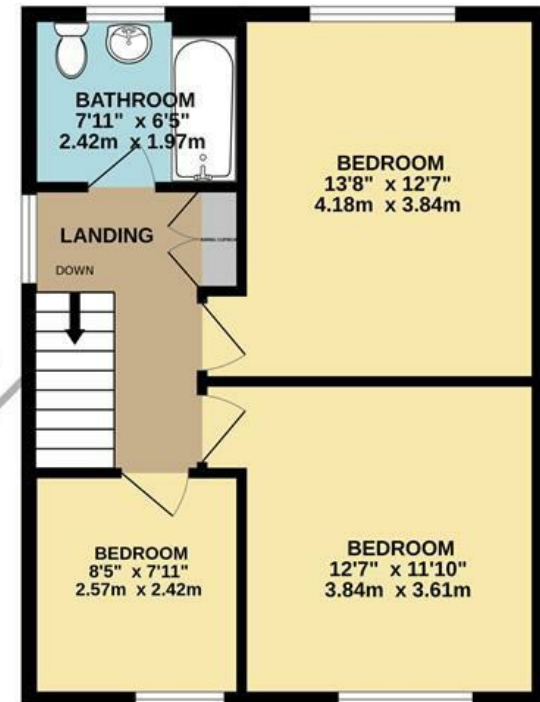




GROUND FLOOR
1368 sq.ft. (127.1 sq.m.) approx.



1ST FLOOR
484 sq.ft. (45.0 sq.m.) approx.



TOTAL FLOOR AREA : 1852 sq.ft. (172.1 sq.m.) approx.

Whilst every attempt has been made to ensure the accuracy of the floorplan contained here, measurements of doors, windows, rooms and any other items are approximate and no responsibility is taken for any error, omission or mis-statement. This plan is for illustrative purposes only and should be used as such by any prospective purchaser. The services, systems and appliances shown have not been tested and no guarantee as to their operability or efficiency can be given.
Made with Metropix ©2025

MEACOCK & JONES

106 Hutton Road
Shenfield
Essex
CM15 8NB

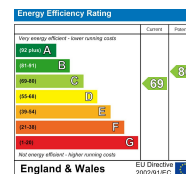
01277 218485

enquiries@meacockjones.co.uk

www.meacockjones.co.uk

Council Tax Band: F

Local Authority: Brentwood Council



Whilst care has been exercised in the preparation of these particulars, statements about the property must not be relied upon as representations or statements of fact. Prospective purchasers must make and rely upon their own enquiries and those of their professional representatives. All measurements, areas and distances given are approximate. We have not tested any apparatus, equipment, fixtures, fittings or services and so cannot verify they are in working order. Any fixtures or fittings detailed in these particulars are not necessarily included in the sale price and Meacock & Jones and their staff accept no liability for any errors contained therein.

ZOOPLA

rightmove

onTheMarket.com

The Property Ombudsman

tsj
APPROVED CODE
TRADING STANDARDS.GOV.UK

naea | propertymark
PROTECTED

